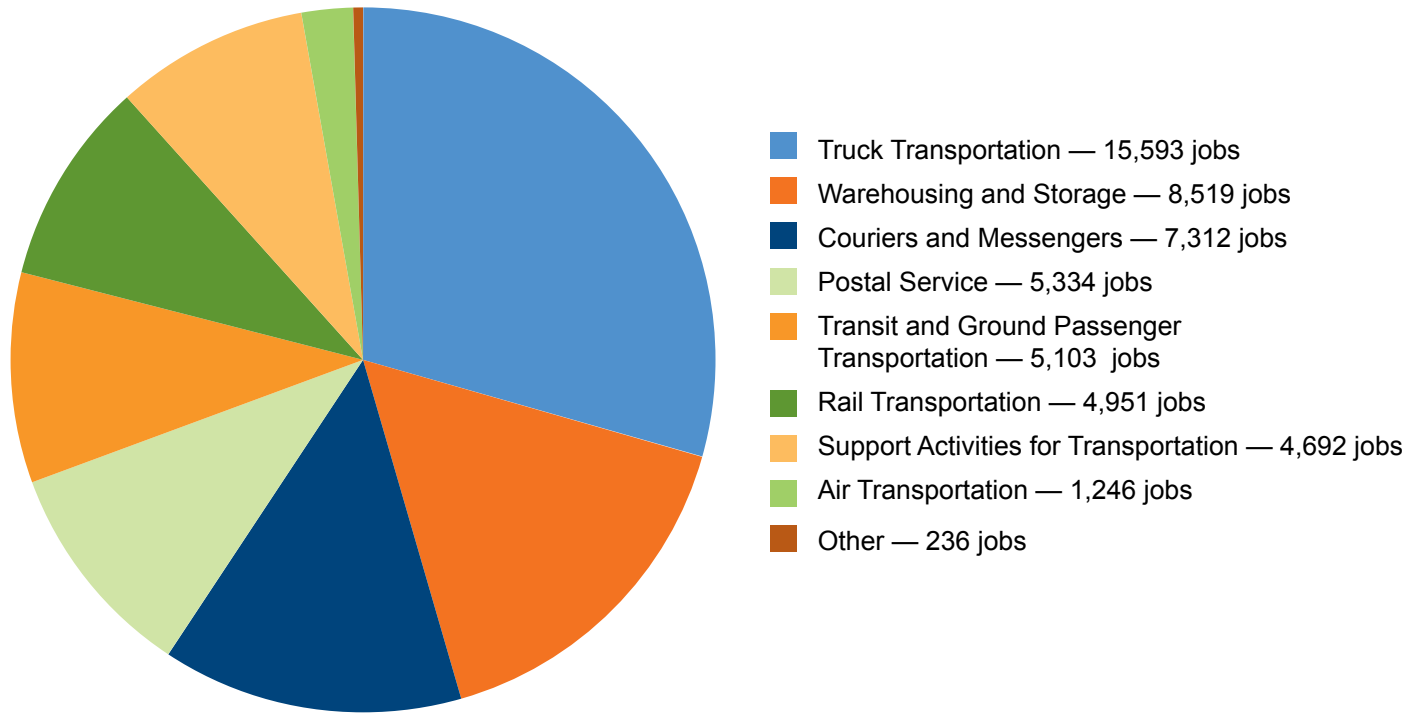


Industry Report: **Transportation**

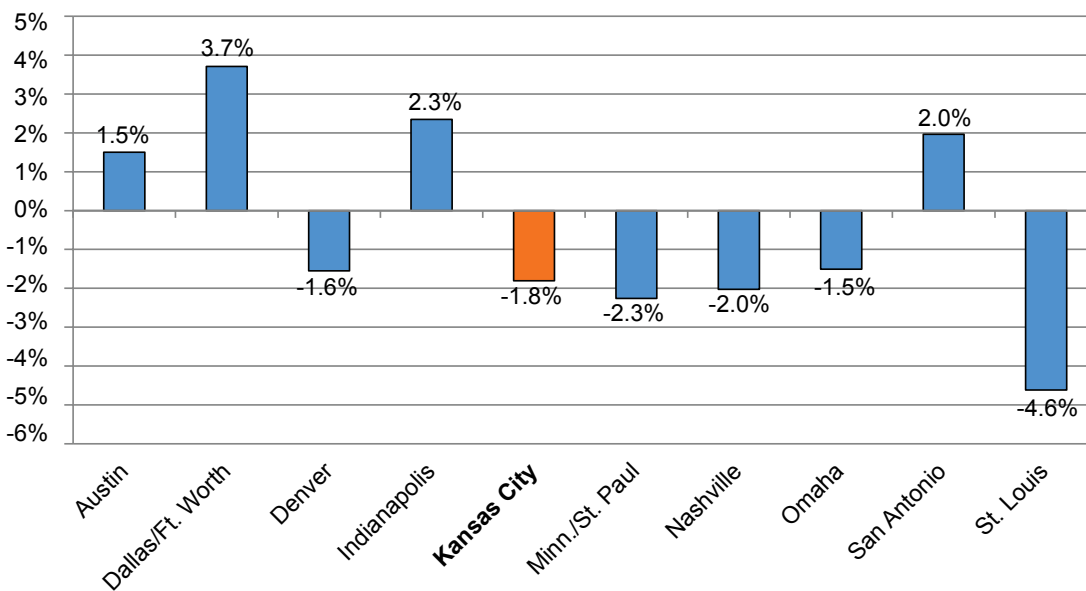
Kansas City has a long history with the transportation industry. From its very beginnings, the city was the last supply port for settlers heading west. Later, it became the site of the first railroad to cross the Missouri river as the Hannibal Bridge opened in 1869. This made Kansas City a major rail center, and it remains the second largest rail hub in the U.S. today, behind Chicago. The transportation industry currently employs about 53,000 workers in the Kansas City region.

2012 Transportation Employment Detail



Source: Economic Modeling Specialist Inc. (EMSI)

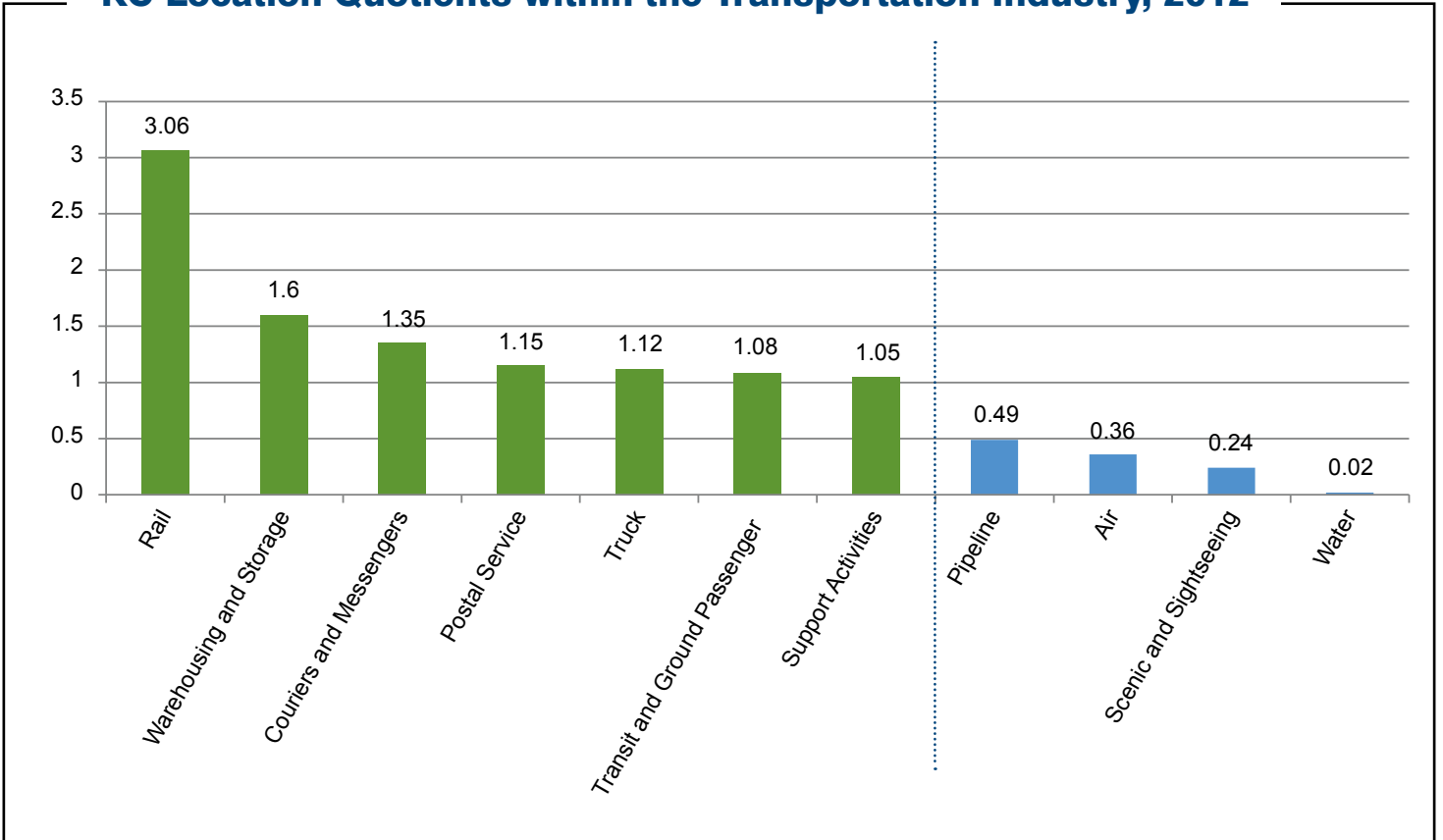
Comparison to Peer Metros



The Kansas City region lagged behind many of its peers in year-over-year job growth in transportation from April 2011–April 2012.

Source: Bureau of Labor Statistics

KC Location Quotients within the Transportation Industry, 2012



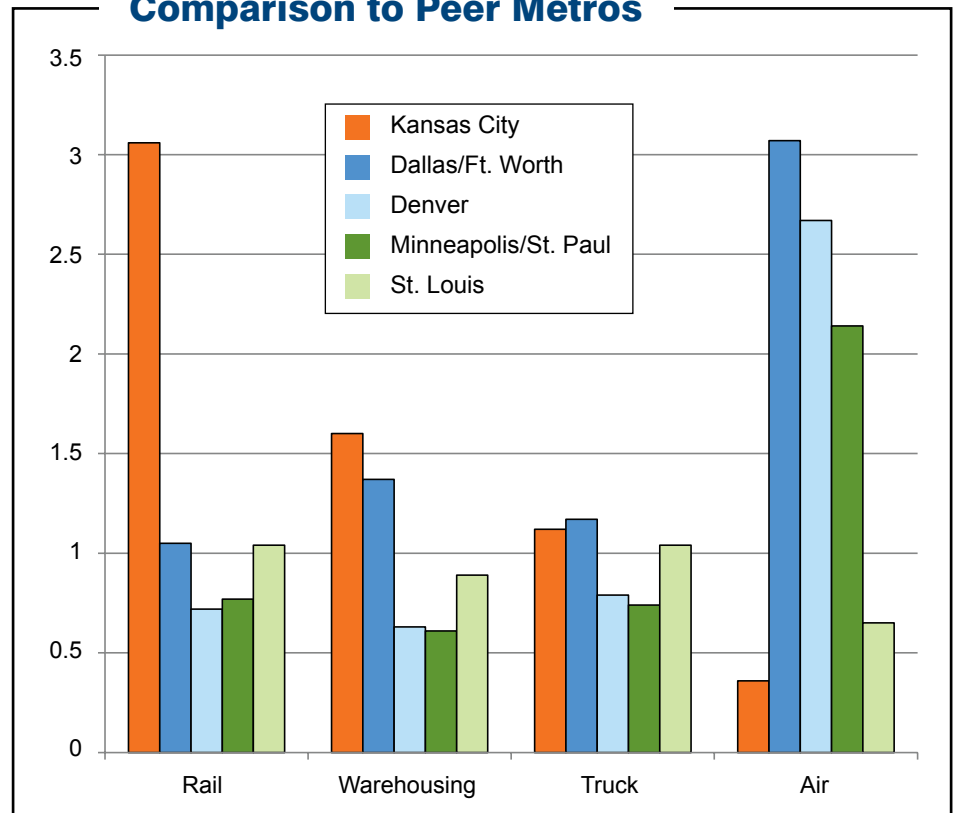
Source: Economic Modeling Specialist Inc. (EMSI)

The location quotient measures the level of specialization a region has in a given industry relative to the nation. Any location quotient greater than one indicates specialization greater than the nation. Using this measure, we see that the Kansas City region is strong in several transportation industry categories.

With its central location, Kansas City is a natural rail and truck transportation hub. New truck-train intermodal facilities in the region have boosted the warehousing industry and will only add to Kansas City's reputation as a transportation center.

Among its peer metros, Kansas City lags in air transportation — likely because most of the peers have major airline hubs, while Kansas City does not.

Comparison to Peer Metros

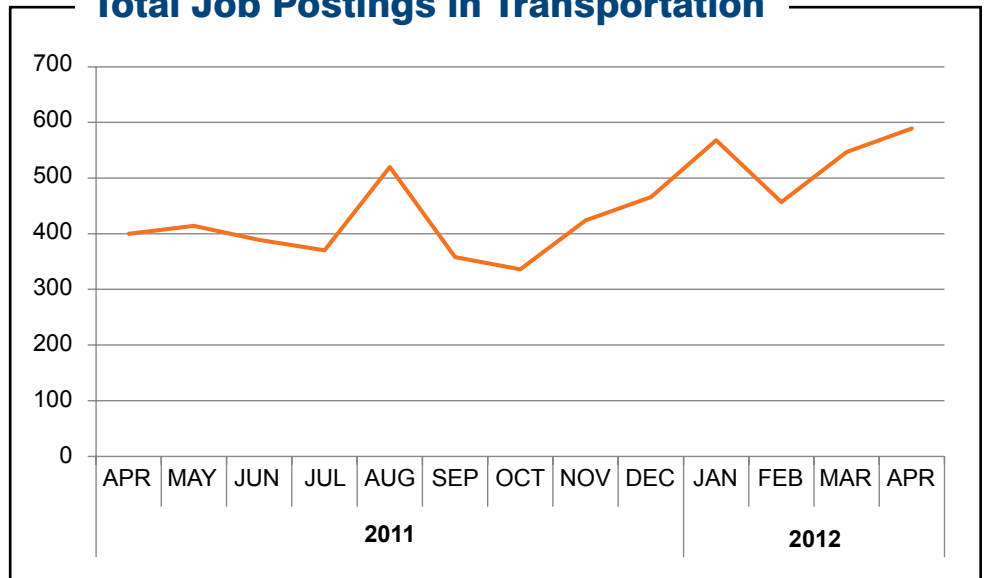


Source: Economic Modeling Specialist Inc. (EMSI)

Nationally, the transportation industry contracted during the recession, with employment decreasing by about 7 percent. But recent trends and rising numbers of local help-wanted ads indicate this industry is making a comeback.

Some of the top occupations transportation employers are recruiting for are truck drivers, taxi drivers, laborers and material movers, locomotive engineers and managers.

Total Job Postings in Transportation



Source: Wanted Analytics

Top KC Occupations in Transportation	Total 2012 Jobs	Annual Openings	Median Hourly Wage
Truck drivers, heavy and tractor-trailer	10,796	568	19.29
Laborers and freight, stock and material movers, hand	4,534	660	11.47
Truck drivers, light or delivery services	2,790	153	14.38
Postal service mail carriers	2,236	84	25.27
Bus drivers, school	2,238	118	11.70
Industrial truck and tractor operators	1,797	236	14.58
Postal service mail sorters, processors and processing machine operators	1,379	13	25.25
Couriers and messengers	1,260	11	9.05
Taxi drivers and chauffeurs	1,306	64	11.43
Shipping, receiving, and traffic clerks	902	153	13.79

Source: Economic Modeling Specialist Inc. (EMSI)

Top KC Employers in Transportation

Sources: EMSI and Kansas City Business Journal

- American Airlines
- YRC
- Freightquote.com
- Kansas City Area Transportation Authority
- Southwest Airlines
- US Post Office
- Overnite Transportation
- FEDEX Freight
- Millard Refrigerated Services

Regional Workforce Intelligence Network www.kcworkforce.com

Funded by an America Works Initiative grant from the Walmart Foundation and supported by the Mid-America Regional Council

